

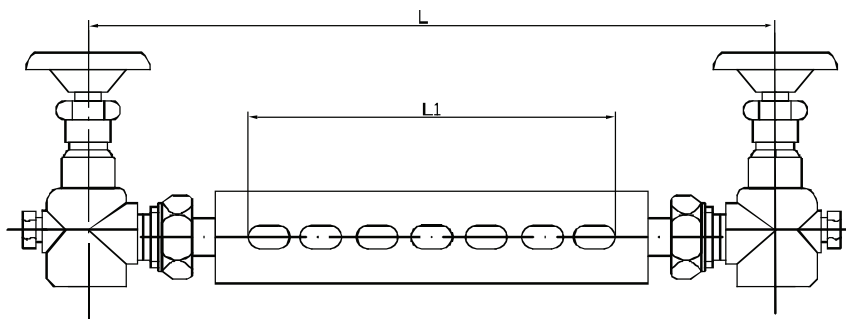
Liquid Level Indicator

Application: These level indicators are used to display the level of ammonia gas in the system.

Material of construction : Valves are made of steel with a ball for protection incase of failure. The glass is fused to the metal at high temperatures.

Temperature: -40 / +125°C

Pressure : Level indicators will work for a max working pressure of 40 Bar.



L(mm)	L1(mm)
300	120
450	270
600	420
800	620
1000	820
1100	920
1200	1020